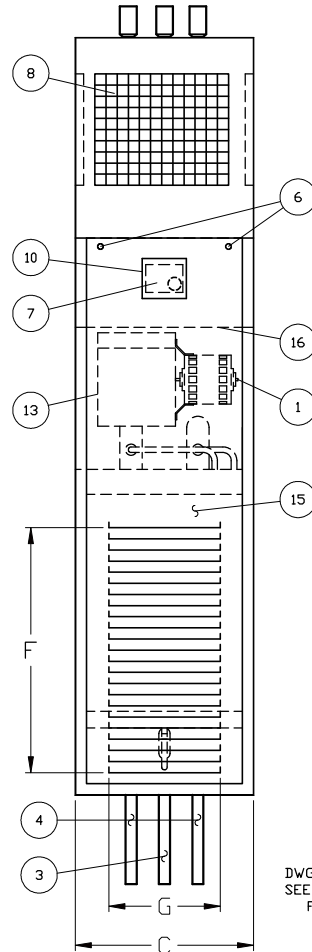
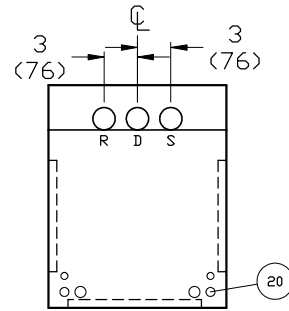
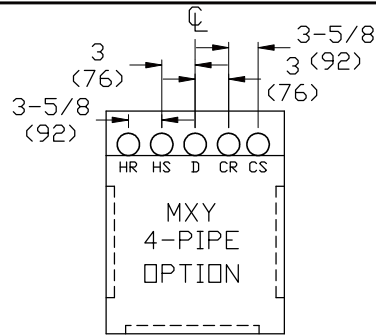
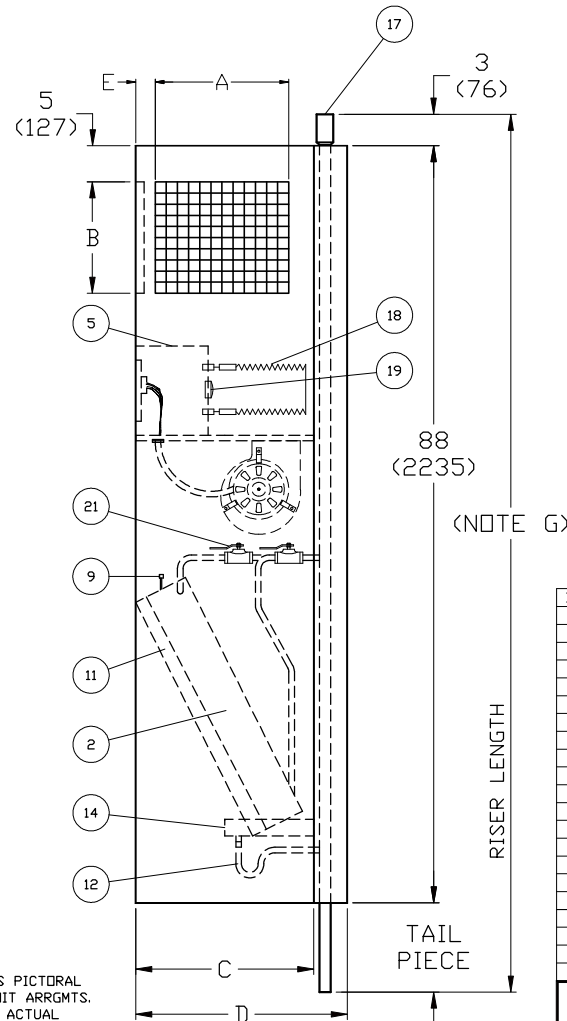


REVISION HISTORY		
REV	DATE	ECN
-	09/24/08	08-0476
A	02/24/10	10-0227



DWG. IS PICTORAL  
SEE UNIT ARRGMTS.  
FOR ACTUAL



#### NOTES:

- UNITS ARE FABRICATED OF GALVANIZED STEEL WITH A 16 GA GALVANIZED FAN DECK.
- ALL RISERS ARE INSULATED.
- THERMOSTATS SHIPPED LOOSE FOR FIELD CONNECTION.
- RISERS ARE FACTORY PIPED TO COIL WITH VALVES AS SPECIFIED.
- BLOWER, MOTOR, VALVES, COIL, AND FILTER ARE ACCESSIBLE THROUGH THE RETURN AIR OPENING.
- UNIT AND CONTROL BOX ARE INSULATED.
- RISER LENGTH=([FLOOR TO FLOOR]+2"(51)), MAXIMUM RISER LENGTH=115"(2921). CONSULT PROJECT SUBMITTAL FOR RISER SPECIFICATIONS.
- MAXIMUM RISER SIZE IS 2-1/2"(64) DIA. IF LARGER SIZES ARE REQUIRED, PLEASE CONSULT THE FACTORY.
- EXPANSION LOOPS IN HOT WATER HEATING CIRCUITS AS REQUIRED.
- A 9"x2-1/4"(229X57) SLOT IS PROVIDED IN THE INSIDE BACK PANEL FOR COIL CONNECTION PENETRATION TO PERMIT EXPANSION & CONTRACTION OF RISERS. CARE MUST BE TAKEN TO POSITION THE RISERS SO THAT COIL CONNECTION IS AT CENTER OF SLOT.
- DWG IS PICTORIAL (SEE UNIT ARRANGEMENTS FOR ACTUAL SUPPLY AND RETURN AIR ORIENTATION).
- DIMENSIONS ARE IN INCHES, DIMS IN ( ) ARE IN MM.

MODEL	SGLE. SUPPLY			DBLE. SUPPLY			DIMENSIONS						FILTER SIZE
	A	B	SIZE	A	B	SIZE	C	D	E	F	G		
MX403	14 (356)	8 (203)	14X8	14 (356)	6 (152)	14X6	17 (432)	22-3/8 (568)	2-1/2 (64)	22-1/8 (562)	14-3/4 (375)	12-1/2 X 24-1/4 X 1 (318X616X25)	
MX404	14 (356)	12 (305)	14X12	14 (356)	8 (203)	14X8	17 (432)	22-3/8 (568)	2-1/2 (64)	22-1/8 (562)	14-3/4 (375)	12-1/2 X 24-1/4 X 1 (318X616X25)	
MX406	14 (356)	12 (305)	14X12	14 (356)	8 (203)	14X8	20 (508)	25-3/8 (645)	2-1/2 (64)	26-5/8 (676)	17-3/4 (451)	16-1/4 X 26-3/4 X 1 (413X679X25)	
MX408	14 (356)	16 (406)	14X16	14 (356)	10 (254)	14X10	20 (508)	25-3/8 (645)	2-1/2 (64)	26-5/8 (676)	17-3/4 (451)	16-1/4 X 26-3/4 X 1 (413X679X25)	
MX410	18 (457)	16 (406)	18X16	14 (356)	12 (305)	14X12	24 (610)	29-3/8 (746)	2-1/2 (64)	31-1/8 (791)	17-3/4 (451)	20-1/2 X 29-1/4 X 1 (521X743X25)	
MX412	18 (457)	16 (406)	18X16	14 (356)	12 (305)	14X12	24 (610)	29-3/8 (746)	2-1/2 (64)	31-1/8 (791)	17-3/4 (451)	20-1/2 X 29-1/4 X 1 (521X743X25)	

ITEM	DESCRIPTION	QTY
1	MOTOR, 3 SPEED, PSC SERIES 'L'	
2	COIL 1/2"(13) O.D. TUBE	1
3	RISER, DRAIN, (TYPE "M" COPPER)	1
4	RISER, SUPPLY & RETURN, (TYPE "M" COPPER)	2/4
5	CONTROL BOX	1
6	CABINET CAMLOCKS	
7	T'STAT	1
8	D.D. STEEL CORE GRILLE ASSY	1
9	AIR VENT, MANUAL	1
10	HINGED CONTROL ACCESS DOOR	1
11	FILTER, T.A. 1"(25), (F&I)	1
12	FLEXIBLE DRAIN TUBE/P-TRAP	1
13	BLOWER	1
14	DRAIN PAN	1
15	RETURN AIR PANEL	1
16	ELECTRICAL ACCESS PANEL	1
17	3"(76) EXPANSION SECTION OF RISER	3/5
18	STRIP HEATER (OPTIONAL)	1
19	HEATER LIMIT SWITCH, (F&I) (OPTIONAL)	1
20	ELECTRICAL KNOCKOUTS	1
21	1/2"(13) ISOLATION BALL VALVES (F&I)	2/4

TITLE  
MX4 UNIT WITH ELECTRIC HEAT

MODEL  
MX4

JOB NUMBER

JOB NAME

DRAWN BY  
D.MCGOUGH

DRAWING NUMBER  
I100-90007733



REVISION  
A

SHEET  
1 OF 1